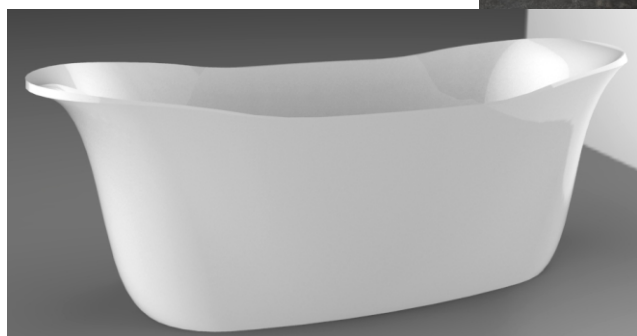


# INSTALLATION

# PF



# INSTALLATION GUIDE

## INSTALLATION PRECAUTION

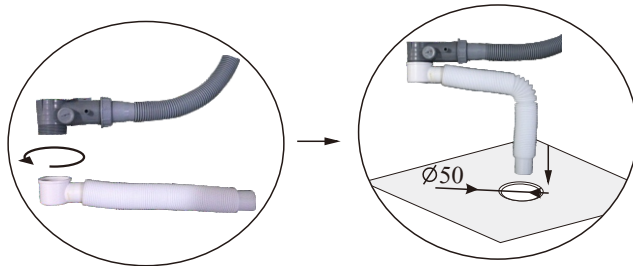
1. The bathtub is only for indoor installation.
2. Please put some soft cloth on the surface of the product to avoid scratches while installing.
3. We strongly recommend you to use the original parts from our company in order to enable the product to achieve the best performance.

## PREPARATION BEFORE INSTALLATION

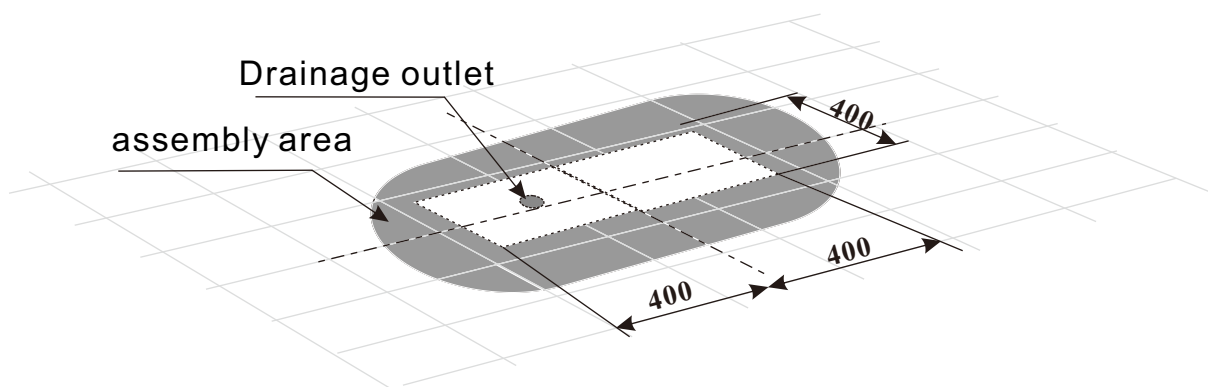
1. Before installation, please get ready for the water supply and the drainage pipe in the installation position. The diameter of the drainage pipe shall be 50mm.
2. Prepare following tools before installation: level and spanner.

## BATH WASTE CONNECTION

- ◆ Connect the bath waste using siphon supplied

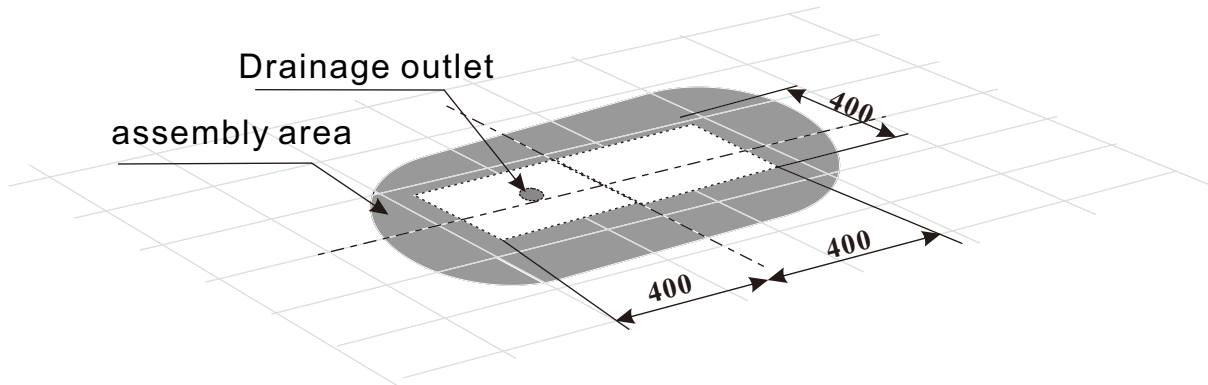


## DIAGRAM OF DRAINAGE OUTLET



- Remark:**
1. Drainage outlet must be installed inside of the blank area.
  2. The diameter of drainage outlet should be 50mm.

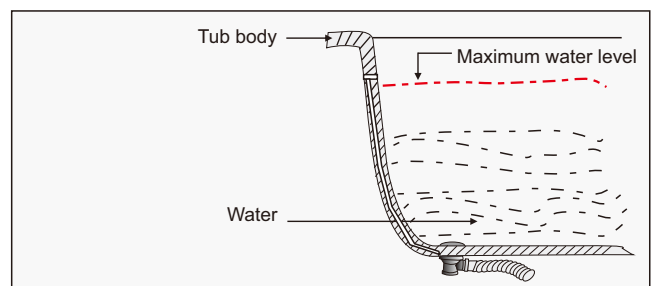
## DIAGRAM OF DRAINAGE OUTLET



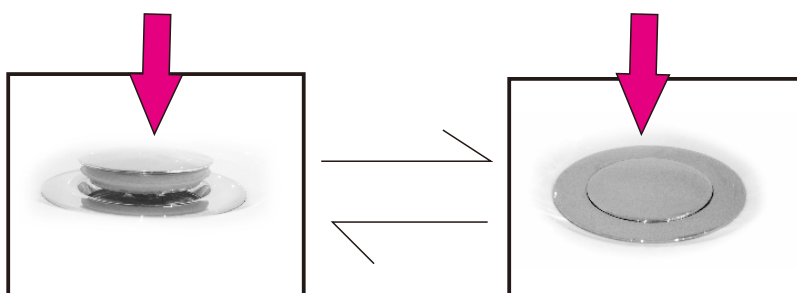
- Remark:** 1. Drainage outlet must be installed inside of the blank area.  
2. The diameter of drainage outlet should be 50mm.

## OPERATING INSTRUCTION

### Water level



### Drainage Usage



## OPERATING AND WATERTIGHT TEST

1).Clean the bathtub thoroughly.

2).Fill the bathtub to overflow level.

Lid on the drainage lid.Fill the water into the bathtub. Ater the water in the tub reach the water level, stop entering water into the bathtub.

Remark:1). Water in the tub don't exceed the overflow level.Then an operation is allowed. Prohibit testing without water.2).Firstly supply cold water into the bathtub and then supply hot water into the bathtub in order to protect the acrylic part.

3).Check to make sure there are no leaks.

## CLEANING AND MAINTENANCE INSTRUCTION

- ◆ Normal cleaning the bathtub:use neutral liquid detergent and soft cloth to clean the bathtub. Don't use amino detergent,corrosive detergent,polishing sandpaper,hard brush to clean the bathtub.If disinfection needed,do not use formate and formaldehyde in order to protect the acrylic part.
- ◆ Clean inerasable stain:
  - 1).Use soft cloth with toothpaste or cetron lemon or vinegar to clean inerasable stain.
  - 2).Use 1500# water sandpaper grind the stain.Then use abrasive pastes and soft cloth to grind it and finally polish it with toothpaste or polishing pastes.
- ◆ Maintenance of the chrome hardware:lightly clean the hardware with soft cloth each week, do not use coarse cloth.
- ◆ After a bath,you must dry water stain with soft cloth,do not use coarse cloth or brush in order to avoid injuring the bathtub's bright surface.
- ◆ In order to keep a bathtub clean and bright,it is necessary to thoroughly clean the bathtub at least one time per each month.
- ◆ Do not place the product in insolation or freezing cold.
- ◆ If any scar in the bathtub,polish with 2000#water sandpaper,then renew it with toothpaste and soft cloth.
- ◆ Sharp hard objects impact is prohibited.

Note:If the problem remains unresolved according to above guidance, then please contact the local dealer or our service department.